

THE GLADES
AT TANAH MERAH

A woman with long dark hair is shown from the chest up, her head tilted back and eyes closed in a state of joy or relaxation. Her arms are raised high, with her hands open and palms facing up. She is wearing a light-colored, patterned top and a wide, textured gold bracelet on her left wrist. The background is a soft-focus scene of green trees and white flowers, bathed in warm, golden light. The overall mood is serene and uplifting.

IMMERSE YOURSELF
IN THE GOOD LIFE.



STEP INTO A
PICTURE - PERFECT
PARADISE .

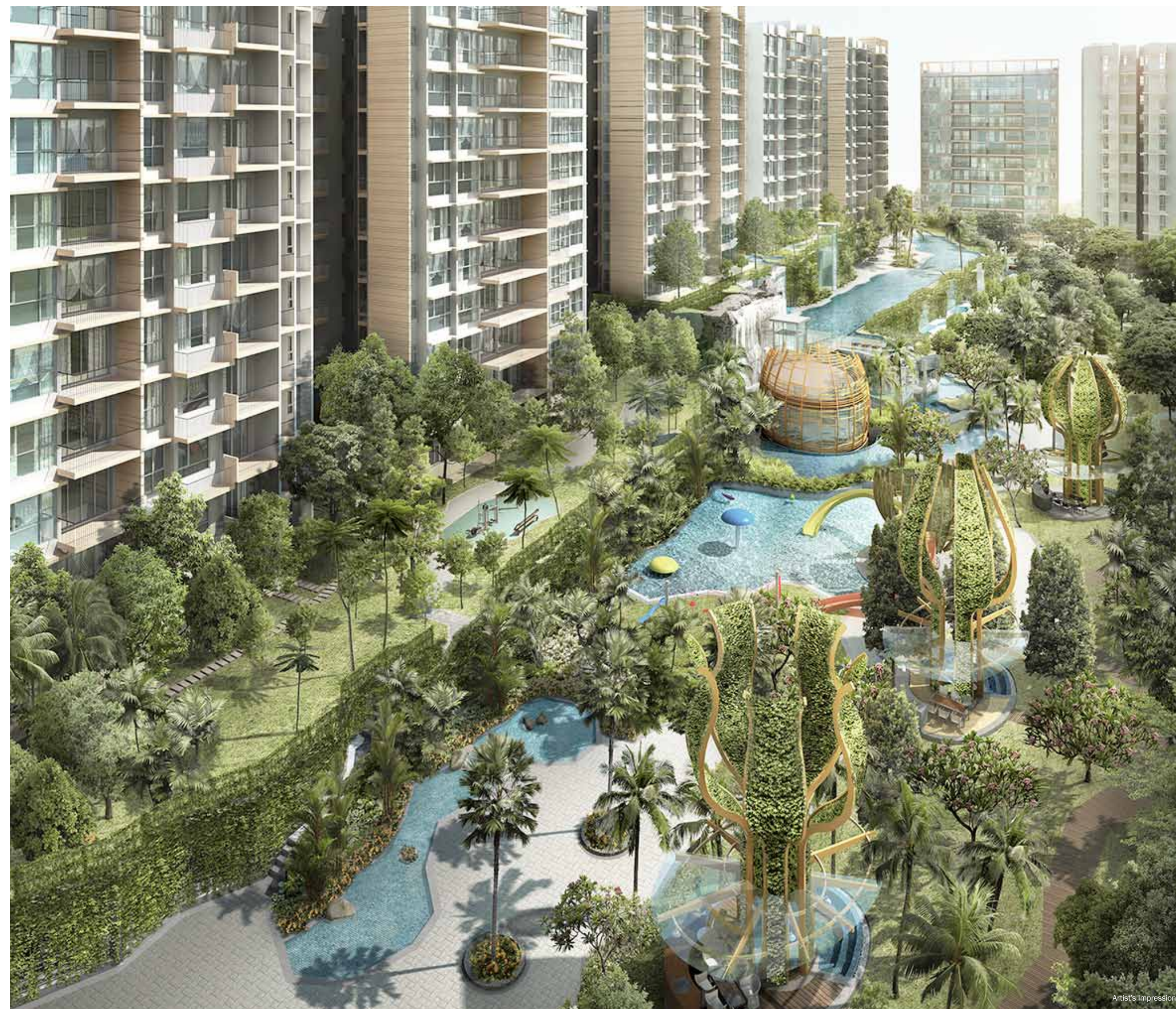
Enter a sanctuary in the heart of Singapore's east.
Where worries dissolve and opportunities take flight.
It's an environment that combines contemporary
living with enchanting landscapes, offering you a life
beyond the ordinary.

Welcome to The Glades at Tanah Merah.

LIVING, NOW ENHANCED.
WITH A SPLASH OF
INNOVATION AND
INGENUITY.

Thoughtful design and inventive ideas lie behind every part of The Glades. Modern facilities and unique architecture, complemented by breathtaking natural terrain and water features, form a beautiful backdrop to a habitat you can call your own.

Step into an oasis of peace that will transport you away from all the bustle - yet keep you well-connected to the city.



Artist's Impression

NEXT DOOR TO THE MRT.
AND TO THE REST OF THE CITY.



Artist's Impression

LIVE LIFE TO THE FULLEST IN THE HEART OF THE EAST.

Discover an environment where your life – and your family’s – can blossom. Whether it’s work, education or leisure, an impressive host of business hubs, schools and retail amenities surrounds you.

- Located right next to Tanah Merah MRT Interchange and connected via a sheltered linkway, you’ll experience unparalleled convenience and connectivity islandwide.
- Your business needs are answered in Changi Business Park, Singapore Expo Convention Centre and the established Tampines Regional Centre.
- Your child’s future is secured in neighbouring

reputable schools including Temasek Primary School, Anglican High School, Red Swastika School, Temasek Junior College, and the MIT-partnered Singapore University of Technology and Design.

- Spend your leisurely afternoons shopping or golfing at the nearby Changi City Point, Tanah Merah Country Club, and upcoming Bedok Mall.
- For outdoor lovers, East Coast Park and Bedok Reservoir are just a five-minute drive away. Cyclists will revel in the extensive routes of the Eastern Coastal Park Connector Network.
- Take off from Changi Airport, only two stops from Tanah Merah MRT Interchange.



EXPERIENCE THE JOY OF
MODERN RESORT LIVING.



ENTER A WORLD
BUILT ONLY FOR YOU.

Lush gardens, gentle terrain, and a majestic waterfall. Within this portrait of idyllic beauty, you'll find a myriad of facilities offering you a complete lifestyle that's both stimulating and carefree.

Featuring a fully-equipped clubhouse with indoor and outdoor fitness studios, relaxing forest spas, bubble pools, adventure slides, and other thoughtful amenities, there's something for everyone.

Together with on-site retail amenities and green spaces, they create an environment that allows you to experience resort living to the fullest.



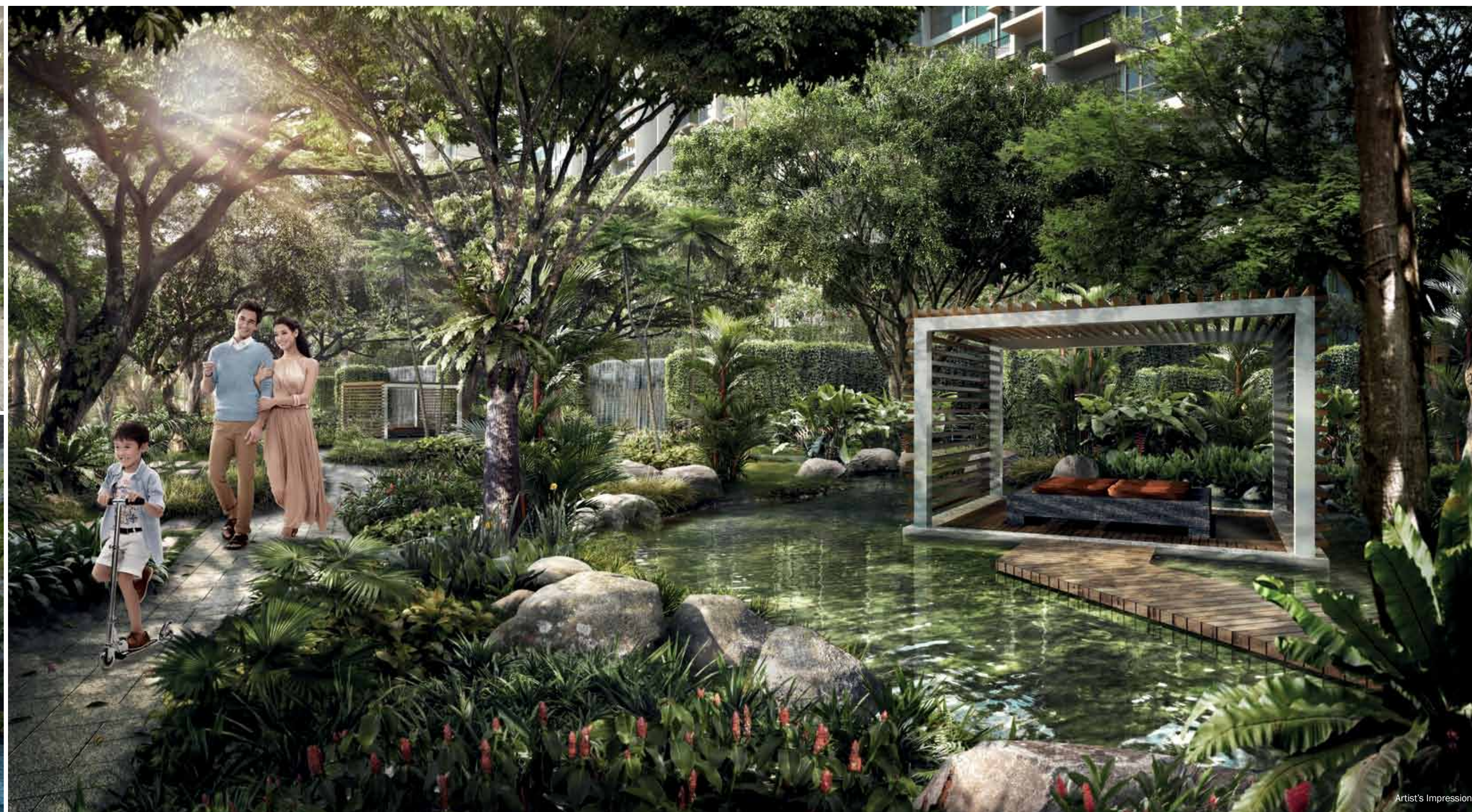
EMBARK ON A
HOLISTIC JOURNEY
IN A PEACEFUL
SANCTUARY.

Be spoilt for choice with iconic and extensive amenities.

Whether it's dining al fresco, soaking in tranquil waters, or strolling through greenery, there are extraordinary experiences to discover.

- Host cosmopolitan dinners or sip cocktails under the Sky Pods in the Mediterranean, Tropical and Zen Pavilions.

- Unwind in the therapeutic spa pools.
- Get your fill of nature in the Rain Forest Valley Walk and Forest Trail.
- Keep fit and fresh in the Aqua Gym, Olympic-length Grand Pool, Garden Terrace, outdoor fitness stations and Wellness Clubhouse, surrounded by cascading waters.
- Eco-lovers can find repose in the Net-Zero Energy Clubhouse and dabble in horticulture in the individual gardening plots for residents.





DISCOVER INFINITE
POSSIBILITIES
ALL IN ONE LOCATION.

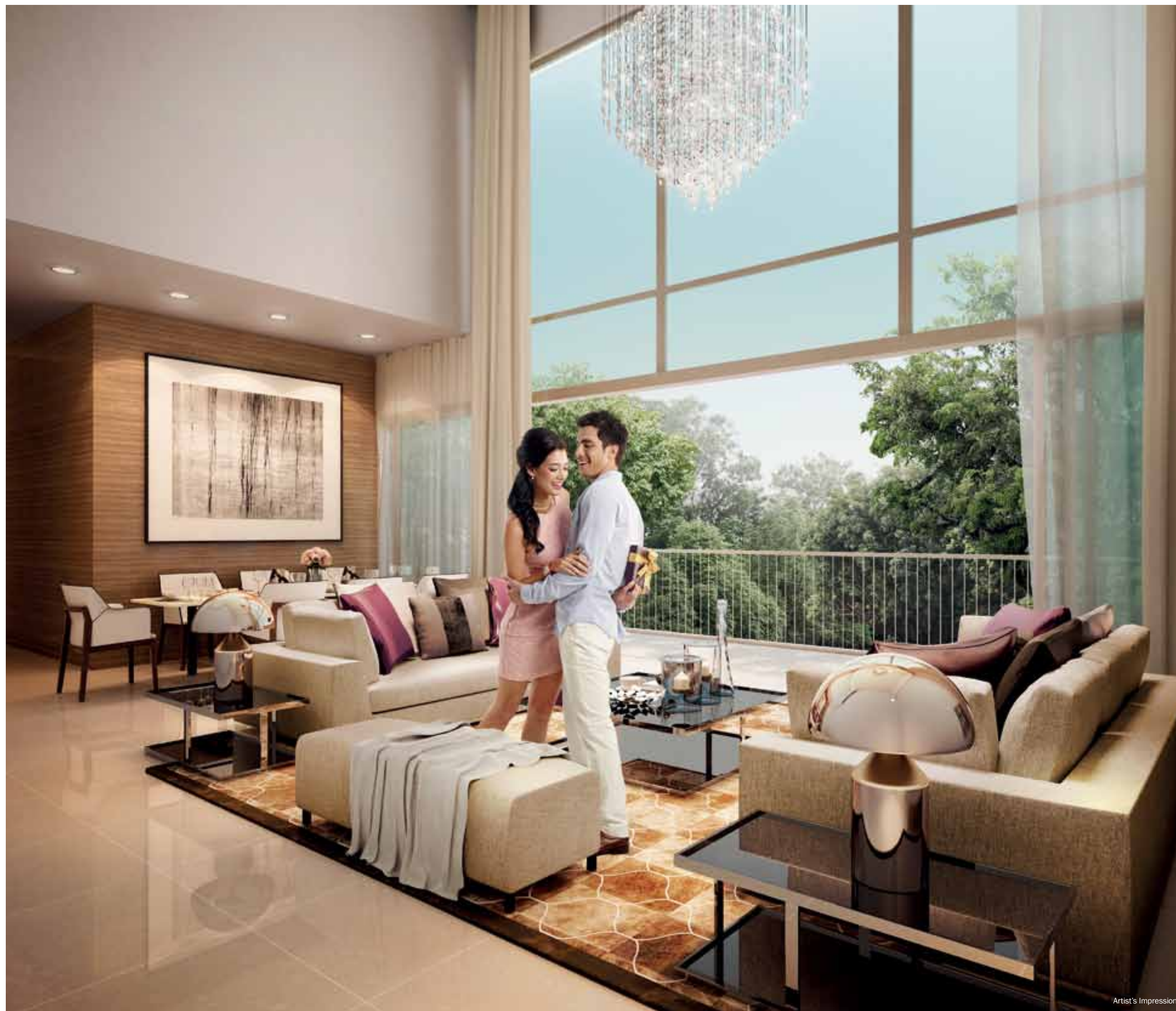
LEGEND

- A. Guardhouse
- B. Entrance Plaza
- C. Island Feature
- D. Vehicular Exit with Guard Post
- E. Side Gate to MRT
- F. Side Gate
- G. Water Cascade
- H. Island Pavilions
- I. Forest Valley
- J. Bio-Swale
- K. Leisure/Bubble Pools
- L. Water Curtains with Vertical Green
- M. Olympic-length Grand Pool
- N. Grand Waterfall
- O. Wellness Clubhouse
 - Gymnasium
 - Indoor Studio
 - Outdoor Deck
- P. Changing/Shower Rooms with Steam Baths
- Q. Aqua Gym
- R. Hydro-therapy Rain Shower
- S. Forest Spa
- T. Sky Pods
 - T1 - Zen Pavilion with Thermal Spa Pool
 - T2 - Mediterranean Pavilion with Spa Pool
 - T3 - Tropical Pavilion with Spa Pool
- U. Eco Pond
- V. Children's Play Zone
 - V1 - Adventure Slide
 - V2 - Play Pool
 - V3 - Playground
- W. Forest Trail
- X. Eco Clubhouse
 - Function Room
 - 67-69 - Commercial Shops
- Y. Outdoor Fitness Stations
- Z. Semi-sunken Tennis Court
- AA. Garden Terrace on second level of Block 12
 - AA1 - Tea Deck
 - AA2 - Lounge Terrace
 - AA3 - Cozy Corner
- BB. Spice and Herb Garden
- CC. Sundeck

Artist's Impression

FAMILIES COME IN
ALL SHAPES AND SIZES.
SO DO OUR APARTMENTS.





LIVE IN A SPACE
THAT YOU CAN
CALL YOUR OWN.

Innovation, invention and flexibility can be found in every residence in The Glades. From 1-bedroom apartments to 5-bedroom penthouses, there's a home tailored just for you.

Suite

Live in comfort and style in a Suite, thoughtfully laid out to maximise capacity and functionality. Each of the 1- to 4-bedroom units is configured intelligently with bright, open spaces.

Convertible

The unique 1- to 2-bedroom Convertible unit offers creative solutions through flexible and modifiable living spaces. The Sliding Integrated Multi-function (SLIM) wall system*, a brainchild of Keppel Land, lets you create a home that is truly your own.

Loft

Live the sky-high life in these deluxe units offering chic gallery-style spaces. Choose from 1- to 4-bedroom Lofts with double-volume living rooms.

Penthouse

The double-storey, 4- to 5-bedroom penthouses sit atop the towers. Lounge on the roof terraces and host friends against the backdrop of the open sky.

Dual-Key

There's no limit to what you can do with a dual-key apartment. The separate yet conjoined units strike a perfect balance between privacy and proximity. Use the extra space as a home office, for parents, friends and tenants, or even as a personal studio.

*Patent pending (Singapore patent application no.: 201305381-4)

FURNISHED WITH
EFFORT AND STYLE
FOR YOUR EFFORTLESS
LUXURY.

Each apartment comes furnished with luxurious materials and fittings sourced from around the world: SMEG appliances, Whirlpool combination washer-dryers, Hansgrohe showers and Vitra bathrooms. To further customise your home, you'll also be able to personalise your finishes with a choice of two colour palettes.



Artist's Impression

KEPPEL LAND

We see property development as a life-touching, life-transforming business. We want to help build lives, realise dreams, and shape landscapes. And in doing so, set a new standard of quality living within Asia, one that is sustainable and answers modern urban needs.

Driven by our commitment to shape a better future, we challenge ourselves to constantly think and see things from a different angle. It is this unwavering approach that has helped us establish a portfolio of award-winning properties across Asia.

Our track record speaks for itself. We brought waterfront living to a whole new level with the iconic residences at Keppel Bay and Marina Bay. We redefined Singapore's skyline and changed the face of business with landmark developments such as Marina Bay Financial Centre and Ocean Financial Centre.

As we look towards the future, we remain focused on providing urban living solutions through our core businesses of property development and property fund management. All while we continue to create live-work-play environments of enduring value for the community.

At Keppel Land, we call this 'Thinking Unboxed'.



Marina Bay Financial Centre

Reflections at Keppel Bay

Ocean Financial Centre

CHINA VANKE

We are dedicated homebuilders who believe architecture has an innate connection with human life. Hence, we devote ourselves to providing delightful, safe and healthy living environments, through which we build great communities and improve the quality of living.

As an industry leader in the PRC with sales revenue of more than SGD 28 billion in 2012, we are more committed than ever to the belief in building quality houses for ordinary people. With this mission, we continue exploring new ideas and upgrading our expertise, processes and technology.

Over the past 24 years, we have built homes for more than 400,000 families across 61 major cities. As of 2012, we have approximately 320 ongoing projects in various stages of development. As the leading innovator in green building technology, many of our projects have demonstrated how sustainability can improve the quality of life and our living environment.

We believe that the future of architecture is one that is simple in its expression, transparent in its organisation, regulated in its structure, and responsible in its delivery. It transcends the boundaries of inside and outside, time and space, culture and religion, and builder and user. It makes our world a welcoming home for everyone.

Architecture – Our tribute to life.



Vanke Center

Vanke Fifth Garden

Vanke Tulou



CALL US AT 6388 6686/6388 3383 OR VISIT WWW.THE-GLADES.COM.SG

Whilst reasonable care has been taken in preparing the brochure and constructing the model and the sales gallery/showflat (the "Materials"), the developer and its agents shall not be held responsible for any inaccuracies in their contents or between the Materials and the actual unit. All statements, literature and depictions in the Materials are not to be regarded as statements or representations of the fact. Visual representations such as layout plans, finishes, illustrations, pictures, photographs and drawings contained in the Materials are artists' impressions only and not representation of fact. Such materials are for general guidance only and should not be relied upon as accurately describing any specific matter. All information, specifications, plans and visual representations contained in the Materials are subject to changes from time to time by the developer and/or the competent authorities and shall not form part of the offer or contract. The Sale and Purchase Agreement shall form the entire agreement between the developer and the purchaser and shall in no way be modified by any statements, representations or promises (whether or not contained in the Materials and/or made by the developer or the agent) made. No part of the Materials shall constitute a representation or warranty. The floor plans are approximate measurements and subject to final survey. All rights reserved.

• Developer: Sherwood Development Pte Ltd • Developer's Licence No.: C1069 • Tenure of land: 99 years leasehold commencing 21 January 2013 • Expected Date of Vacant Possession: 31 December 2017 • Expected Date of Legal Completion: 31 December 2020 • Location of Housing Project including Lot No./Mukim: Lot 10896V MK 27 at Bedok Rise • Encumbrances on the Land: Mortgage No. ID/682068P in favour of United Overseas Bank Limited.

